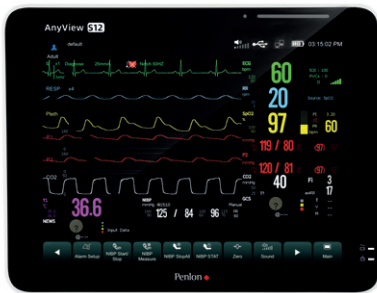


# Penlon AnyView P18/P15/S12 Patient Monitor

## PATIENT MONITORING SOLUTIONS

- ◆ P-Series Modular and S-Series Preconfigured patient monitors for anaesthesia and critical care<sup>1</sup>
- ◆ User-defined multi-parameter display
- ◆ Seamless monitoring with the mobile module<sup>1</sup>
- ◆ Full transport functionality as a secondary display, remote from main monitor<sup>1</sup>
- ◆ CE marked



# Penlon AnyView P18/P15/S12 Patient Monitor



## AnyView S12 Preconfigured Patient Monitor

- 1 12" TFT LCD touchscreen colour display with optional slave screen capability
- 2 Standard parameters: 3/5 lead ECG, RESP, NIBP, SpO<sub>2</sub>, PR, and 2-TEMP
- 3 Networkable as standard, with wireless LAN option
- 4 Quiet, fan-less cooling system
- 5 Optional thermal printer
- 6 User-definable smart-key controls
- 7 Rechargeable lithium battery



## AnyView P18/P15 Modular Patient Monitors

- 1 18/15" TFT LCD touchscreen colour display and slave screen capability
- 2 Parameters: 3/5/6 lead ECG, RESP, SpO<sub>2</sub>, PR, NIBP, 2-TEMP, 2-IBP, EtCO<sub>2</sub>, Anaesthetic Gas, Cardiac Output, EEG, BIS, RM, Nerve Stimulator, Regional Oximetry and Biolink
- 3 Multi-parameter, dual-function P1 - Plug-in module/ Transport monitor with 5.5" touchscreen
- 4 Up to 1800-hour trend data storage
- 5 Networkable as standard, with wireless LAN option
- 6 Quiet, fan-less cooling system
- 7 Optional thermal printer
- 8 User-definable smart-key controls
- 9 Rechargeable lithium battery

# The Penlon AnyView Patient Monitor Range provides clarity, simplicity, flexibility and fast processing power for superior monitoring in all clinical areas.

Contemporary design and extensive range of parameters provide flexibility for a wide variety of clinical situations, including the operating theatre and recovery.



## Control and Visualisation

18/15/12" TFT colour touchscreen display with smart-key control and audio/visual indicators.



## Calculations

Perform haemodynamic calculations and concentration calculations of commonly used drugs



## Networking Capabilities

RJ45 wired networking as standard, with IEEE 802.11n wireless option.



## Patient Profiles

Suitable for adult, paediatric and neonatal patient profiles.



## Anaesthetic Gas Monitoring

Mainstream or Sidestream, five anaesthetic agents, and measurement of CO<sub>2</sub>, N<sub>2</sub>O and O<sub>2</sub> (Sidestream only).



## Alarms

Audible and visual alarms with colour coding separate for physiological and technical alarms.



## Connectivity

Extensive range of connection ports including RJ45, DVI, USB, Nurse Call and Auxiliary Module connector.



## Battery BackUp

Provides power to the machine for up to 4 hours (S12) or 3 hours (P18/P15), in the event of an AC mains power failure.



## Cooling System

Quiet, fan-less cooling system provides unintrusive operation.



## Mounting Options

Rolling stand<sup>1</sup>, wall mount<sup>1</sup> or anaesthesia workstation mounting options.



## Optional Thermal Recorder

Output patient information, measurement data, review data and up to three waveforms.



## Maintenance and After-Sales Support

Comprehensive warranty provides peace of mind and after-sales support. Additional services and warranties can be purchased to meet your particular needs.



## Electromagnetic Compatibility

Fully compliant to IEC 60601-1-2, ISO 80601-2-55, IEC 80601-2-30, IEC 80601-2-49, ISO 80601-2-61, IEC 60601-2-34

## P1 - Transport Monitor

Multifunctional plug-in module; can be detached and used for standalone monitoring during patient transfer and recovery.

### 1 Multi-parameter Module

The P1 functions as a multi-parameter plug-in module with five standard parameters and multiple connectivity options.

### 2 Patient Transfer

Easy to remove/refit. Functionality includes patient data storage during transfer.

### 3 At the Bedside

Connect to another host monitor and upload patient data. P1 is compact and lightweight (0.9 kg), and gives up to 240 minutes operation (rechargeable lithium ion battery). Full standalone functionality with 5.5" touchscreen.

### 4 Colour TFT LCD Display

5.5" display with automatic screen rotation to portrait or landscape orientation.

1



2



3



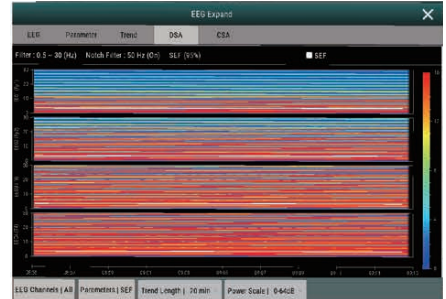
4



<sup>1</sup>Not available on S12 preconfigured patient monitor

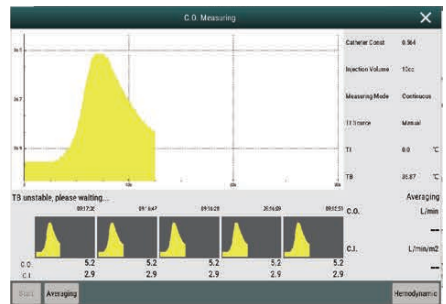
## Electroencephalography<sup>1</sup>

Electroencephalograph (EEG) is used to determine changes in brain activity that assist in diagnosing brain activity.



## Cardiac Output

Cardiac output (CO) monitoring enables clinicians to assess blood flow to the tissues and provides information on how best to support a failing circulation.



## Bispectral Index<sup>1</sup>

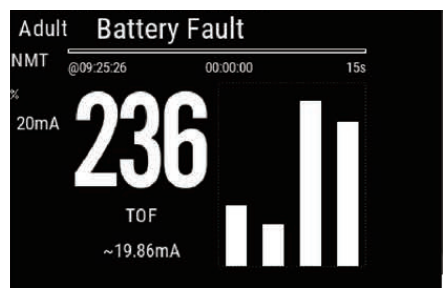
Bispectral Index (BIS) monitoring enables clinicians to monitor the consciousness level of patients under general anaesthesia or sedation in the operating room and intensive care unit.



The design of the AnyView Patient Monitor Range allows clinicians to configure the patient monitor to their clinical requirements, whether for anaesthesia or critical care applications.

## Neuromuscular Transmission<sup>1</sup>

NMT measures the acceleration of muscle movement by applying controllable electrical stimulation to specific motor nerves, calculates muscle contraction force, and assesses muscle relaxation under a neuromuscular block.



<sup>1</sup>Not available on S12 preconfigured patient monitor

## Features and Benefits



Features	Benefits
Touchscreen display	Precise control at your fingertips
Optional Sidestream or Mainstream Anaesthetic Gas, N <sub>2</sub> O, CO <sub>2</sub> and SpO <sub>2</sub> monitoring <sup>1</sup>	Comprehensive gas monitoring for enhanced economy and patient safety
Modular parameter options <sup>1</sup>	Flexible combinations and easy to upgrade
Extensive parameter options	Comprehensive choice provides optimum patient care
Mobile module <sup>1</sup>	Functions as a multi-parameter plug-in module with 2-TEMP, NIBP, SpO <sub>2</sub> , 3/5 ECG and 2-IBP
P1 - Continuous monitoring <sup>1</sup>	Can be detached and used for standalone monitoring during patient transfer and recovery
Multiple connectivity options	Easy to integrate into existing technology infrastructure
Fan-less cooling system	Quiet running provides unintrusive operation
Battery back up	Provides power for up to one hour
Maintenance and after-sales support	Customer peace of mind

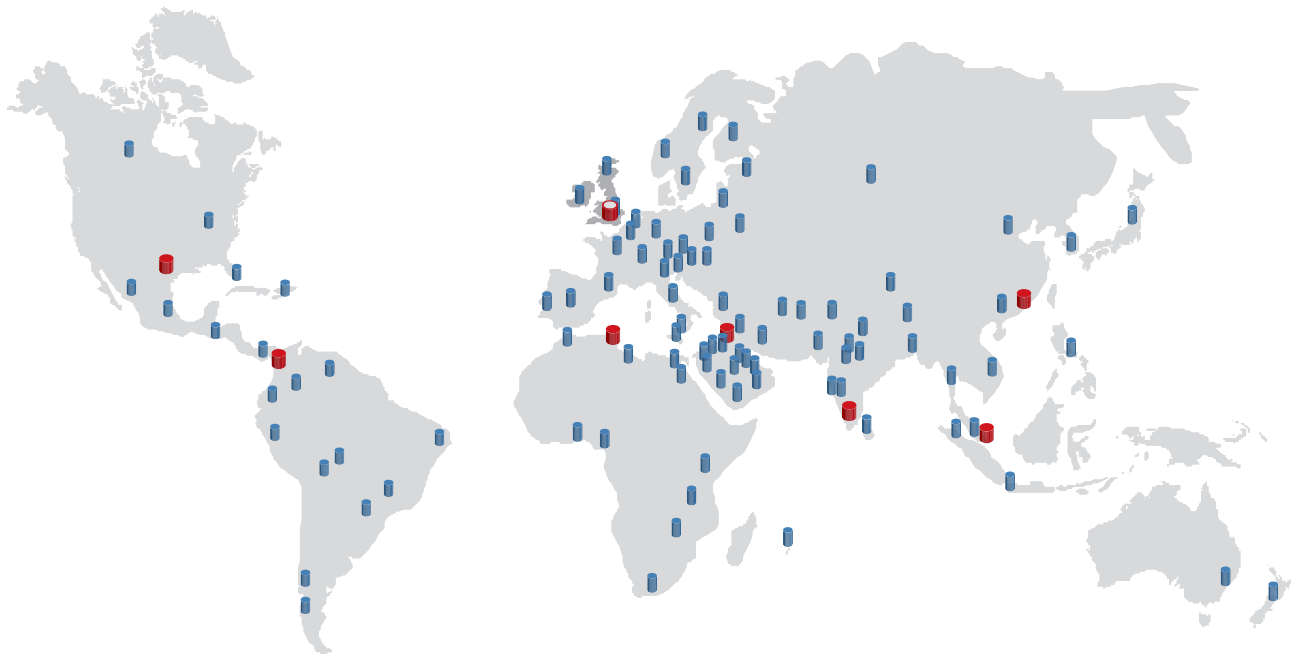
<sup>1</sup>Not available on S12 preconfigured patient monitor

## About Penlon ♦

Penlon was founded in 1943 by personnel from the Department of Anaesthesia at Oxford University. One of the first products was the Macintosh Laryngoscope, then a revolutionary design, and still the most widely used today, invented by the late Sir Robert Macintosh, Professor of Anaesthetics.

Today Penlon continues to design, engineer and build high quality anaesthesia products at its UK operations headquarters. The company is proud to have 80 years' dedicated experience, many awards for product design, and an impressive four Queen's Awards for Enterprise, one for 'Innovation' and three for 'International Trade'.

Penlon devices feature intuitive user interfaces that require minimal operator training, putting clinicians in control, enabling them to focus on what is most important – patient safety and wellbeing.



 Global Headquarters     Local Office     Distribution Partner



[facebook.com/PenlonGlobal](https://facebook.com/PenlonGlobal)



[linkedin.com/company/penlon-ltd](https://linkedin.com/company/penlon-ltd)



[twitter.com/PenlonGlobal](https://twitter.com/PenlonGlobal)



1639

Doc. No. AV01225L / December 2022. Penlon is a trademark of Penlon Limited. All other trademarks are the property of their respective owners.

A Medcaptain Company

© Penlon Ltd. 2022 All rights reserved. Distributed by: Penlon Limited • Manufactured by: Biolight Co., Ltd.

Penlon Limited  
Abingdon Science Park  
Barton Lane, Abingdon  
OX14 3NB, UK

**General**  
t +44 (0) 1235 547000  
f +44 (0) 1235 547041  
w [www.penlon.com](http://www.penlon.com)

**International Sales**  
t +44 (0) 1235 547001  
f +44 (0) 1235 547021  
e [international.sales@penlon.com](mailto:international.sales@penlon.com)

**UK Sales**  
t +44 (0) 1235 547036  
f +44 (0) 1235 547023  
e [uk.sales@penlon.com](mailto:uk.sales@penlon.com)

**Technical Support**  
t +44 (0) 1235 547060  
f +44 (0) 1235 547061  
e [tech.support@penlon.com](mailto:tech.support@penlon.com)

EC REP

OBELIS S.A.  
Bd Général Wahis, 53  
B-1030 Brussels  
Belgium